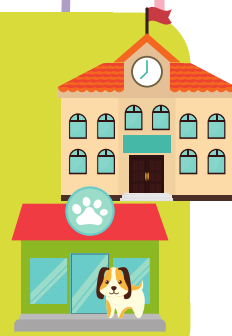
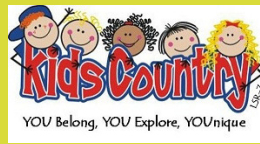




**BEFORE & AFTER**  
*School Services*



# U CAN BE AT BASS SPRING BREAK

**NOW ENROLLING!**

**Deadline to enroll or cancel for refund:**  
9:00 a.m. Thursday, March 14th

**DATES:**  
March 18th - 22nd

**RATES:**  
\$25/day,  
1-5 Days

Wear BASS T-shirt on Field Trips  Bring a lunch everyday 




**HAVE ADDITIONAL QUESTIONS? CALL OUR BASS ADMIN OFFICE:**  
**986-3440**  
OR EMAIL US FROM OUR CONTACT PAGE ON [BASS.LSR7.ORG](http://BASS.LSR7.ORG)

## HOW TO ENROLL

- Login as the Primary Account holder
- Must complete enrollment on a computer, not a phone or tablet
- Click this link to enroll: [BASS EZ Child Track parent portal](#) OR go to [bass.lsr7.org](http://bass.lsr7.org) and click "Enroll my Child"
- Must be currently enrolled in the 2018-19 Kids Country or 3LYNX school year.
- On the left hand side, under Non-School Days Program, click "Register or Enroll"
- Click on your child's school that your child attends all year, do NOT click on the combo location.
- Select the date(s) you want your child to attend and click "Confirm Enrollment" to submit.

## CURRICULUM

Each combo location will have the theme:  
**YOU CAN BE**

The students voted on the top 5 careers they would like to learn about during Spring Break week. They might learn about becoming a veterinarian, meteorologist, government employee, teacher, athlete, police officer, fire fighter, video game designer, engineer, doctor, nurse, zoologist, etc. There will be a dramatic play area, library books, guest speaker, and field trips reflecting this theme.

Please refer to the back of this flyer for information regarding locations and field trips.





# SPRING BREAK SITES & FIELD TRIPS



## LONGVIEW FARM

Longview Farm, Cedar Creek

986-4191

### Field Trips

**Wednesday, March 20**

Paradise Park/Waldo

**Thursday, March 21**

HyVee East

## MEADOW LANE

Meadow Lane, Westview

986-3261

### Field Trips

**Tuesday, March 19**

Paradise Park/Waldo Pizza

**Thursday, March 21**

Chiefs Sports Lab

## PLEASANT LEA

Pleasant Lea, Lee's Summit

986-1241

### Field Trips

**Wednesday, March 20**

Wayside Waifs

**Thursday, March 21**

Paradise Park/Waldo Pizza

## PRAIRIE VIEW

Prairie View, Highland Park

986-2291

### Field Trips

**Wednesday, March 20**

Paradise Park/Waldo Pizza

**Thursday, March 21**

Chiefs Sports Lab

## RICHARDSON

Richardson, Mason

986-2231

### Field Trips

**Tuesday, March 19**

Colonial Gardens/ Waldo Pizza/ City Hall

**Thursday, March 21**

Paradise Park

## SUMMIT POINTE

Summit Pointe, Hawthorn Hill

986-4221

### Field Trips

**Tuesday, March 19**

Paradise Park/Waldo

**Wednesday, March 20**

LS Airport

## SUNSET VALLEY

Sunset Valley, Woodland

986-4251

### Field Trips

**Wednesday, March 20**

Fire Dept/ Waldo Pizza/ Mid Cont. Library

**Thursday, March 21**

Paradise Park

## TRAILRIDGE

Trailridge, Greenwood

986-1301

### Field Trips

**Wednesday, March 20**

Paradise Park/ Waldo Pizza

**Thursday, March 21**

Chiefs Sports Lab

## UNDERWOOD

Underwood, Hazel Grove

986-3291

### Field Trips

**Tuesday, March 19**

Paradise Park

**Thursday, March 21**

KCTV 5/ Waldo Pizza

## 3LYNX

Prairie View

986-2291

### Field Trips

**Tuesday, March 19**

Fire Dept/ Waldo Pizza

**Thursday, March 21**

B&B Movie Theatre

SEND US YOUR VALUABLE FEEDBACK  
ABOUT YOUR CHILDCARE EXPERIENCE

CLICK BELOW OR SEARCH TO

WRITE A REVIEW ON

[FACEBOOK](#)

[GOOGLE](#)